



THE  
INTERIOR SHUTTER  
COLLECTION

 **TOTALLY  
SHUTTERS**



## Beautiful, stylish made-to-measure shutters

---

Shutters offer versatile light control and privacy. Excellent insulation properties can help to keep rooms warm in the winter and cool in the summer.





Austin Tier-on-Tier Shutter with 76mm louvres and Central Tilt Rod.

## AUSTIN HARDWOOD SHUTTERS

Transform your home with the luxury and elegance of a hardwood shutter. Our made-to-measure shutters are skilfully hand-made by quality craftsmen.

Select from one of our many paint or stain finishes; or opt for a custom colour to complement and enhance your home.

## NEWPORT HARDWOOD PREMIUM SHUTTERS

Newport is a premium range of shutters made with wood from the Poplar tree; a dense and durable hardwood which, when painted, gives a beautifully luxurious finish.

Newport is available in a wide range of paint colours, including custom colours.



Newport Full Height Shutter with Mid-Rail, 89mm Louvres and Invisitilt.



## DULWICH PVC SHUTTERS

Perfect for any window and particularly suitable for rooms that are prone to higher moisture levels; Dulwich is a PVC shutter that is water-resistant.

With our PVC shutters, every room can be elegant; there is no need to compromise on style or practicality.

Dulwich is ideal for kitchens, bathrooms, shower rooms, ensuites and utility rooms.



# Bespoke shutters that are perfect for your home

---

Our interior shutters are available in a variety of combinations which enable you to create a shutter that makes a visual impact and best suits your window.

As well as transforming a room, each style option will enhance light and thermal control, privacy and sound proofing.

Choose from Full Height, Café, Tier-on-Tier and Tracked shutters to provide the perfect complement to your home.

## FULL HEIGHT

---

Full height shutters are an elegant design that cover the entire window and are particularly suited to tall windows and French and patio doors.

Full Height shutters provide additional privacy and security. The option to have a mid-rail or split louvres allows you to tilt some, rather than all, the louvres.

Austin Full Height Shutter with Split Control, 89mm Louvres and Invisitilt.





Austin Café Style Shutter with 89mm Louvres and Central Tilt Rod.

## CAFÉ STYLE

Café Style shutters are ideal for windows where full privacy is not required. They cover the bottom half of a window, creating privacy at the lower level, whilst allowing light into the room through the top of the window. Café Style shutters enable natural light into the room and are especially ideal for sash windows.

## TIER-ON-TIER

Tier-on-Tier shutters cover the whole of the window but feature top and bottom panels which open independently of each other. These popular shutters enable versatile control of light and privacy in the daily use of your shutters.



Austin Tier-on-Tier Shutter with 89mm Louvres and Central Tilt Rod.



## TRACKED SHUTTERS

---

Tracked Shutters simply slide on a track, providing easy access through patio, sliding or bifold doors. This type of shutter is also ideal for very wide windows.

There are two types of Tracked Shutter:

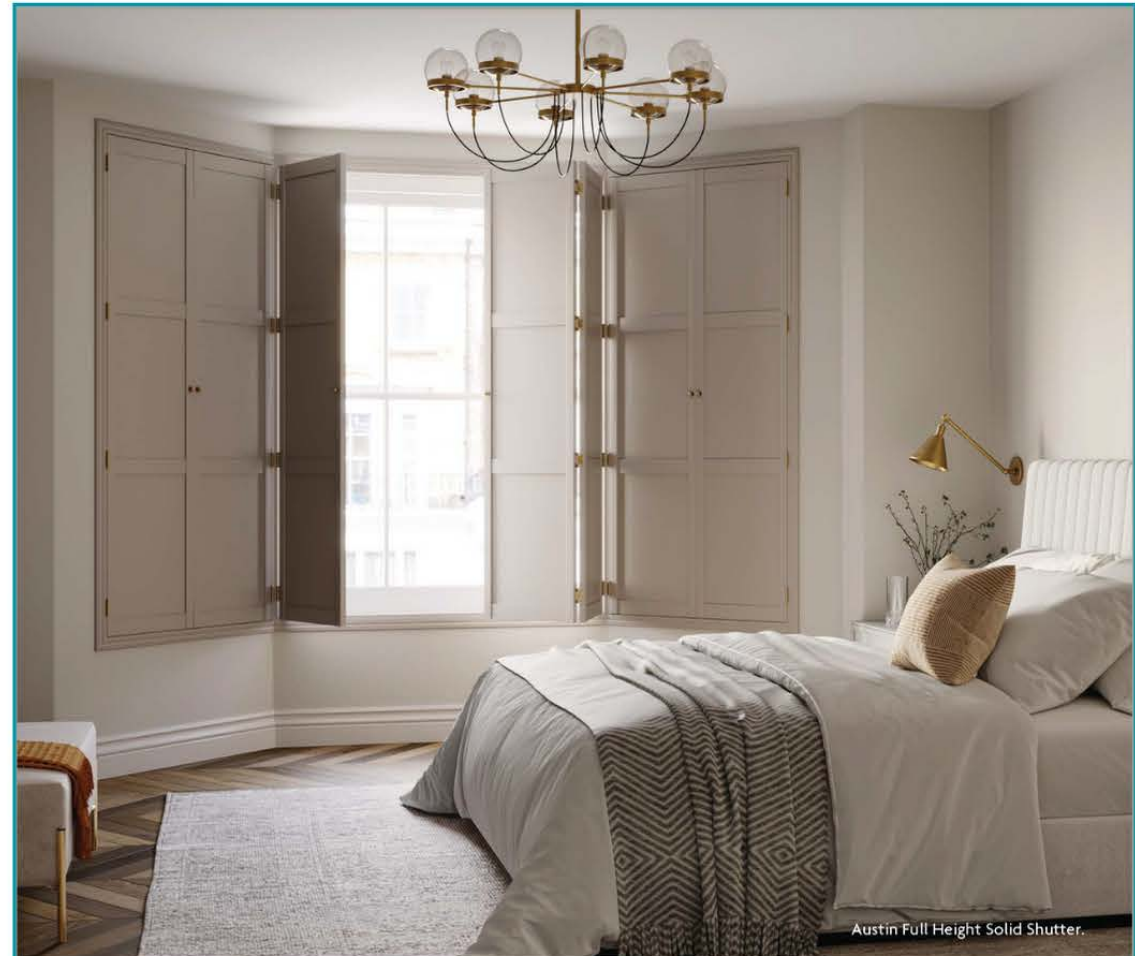
**Bifold** – An even number of panels fold back

**Bi-pass** – Panels slide behind one another to create an opening

Tracked shutters can also be used as a stylish and versatile room divider.



Austin Bi-Folding Tracked Shutter with Mid-Rail, 89mm Louvres and Invisitilt.



Austin Full Height Solid Shutter.

## SOLID SHUTTERS

---

Inspired by traditional Victorian window coverings, Solid Shutters offer optimal light blackout and privacy. Providing a more time-honoured feel, solid panels are opened and closed to control light into the room. Available in Full Height, Café, Tier-on-Tier and Tracked styles.

Solid shutters are available in our Austin and Newport hardwood shutter ranges.



## SHAPED SHUTTERS

Our shutters are custom built to fit any shape or style of window – however unusual they may be. With shutters you won't compromise or conceal the architectural design of your unique windows – our beautiful bespoke shutters will enhance them and retain their originality.

Whether large or small, traditional or modern, square bay or curved bay, rectangular, square or shaped, all windows are catered for within our comprehensive portfolio of shutter products. Any shape is available in our Austin and Newport hardwood shutter range.

Austin Full Height Shaped Shutter with Mid-Rail, 76mm Louvres and Invisitilt.



Newport Full Height Shaped Shutter with Mid-Rail, 76mm Louvres and Invisitilt.



Austin Full Height Shutter with  
Motorised Roller Blind, Mid-Rail,  
76mm Louvres and Offset Tilt Rod.



Austin Full Height Shutters with Honeycomb  
Blinds, Mid-Rail, 76mm Louvres and Invisitilt.

## SHUTTERS WITH BLINDS

Perfect for rooms where darkening is a priority.

Blinds are positioned in a specially designed frame behind the louvres and are operated independently of the shutter. Pleated blinds are available in a choice of blackout cellular fabrics and can be manually operated or motorised.

Motorised Roller blinds are available in a range of fabrics including sheer, translucent and blackout.

# Natural living, with sustainable wood shutters

**Paulownia** wood is highly valued and prized for its light silvery colour, fine grain and characteristic burls and ripples, which some have likened to flowing water. In Japan, Paulownia trees were traditionally planted after the birth of girls, and the mature wood used to make a dresser for their homes when they married.

Window shutters made from Paulownia wood can provide a range of benefits, from its lightweight and stable characteristics to its beautiful aesthetics and eco-friendly credentials:

**Lightweight:** Paulownia wood is incredibly lightweight, making it easy to handle during manufacturing and installation. This can be particularly beneficial for larger window shutters, which can be heavy and difficult to manage when made from manmade materials or heavier woods.

**Stability:** Paulownia wood is known for its stability, meaning that it is less likely to warp or shrink over time. This makes it an excellent choice for use in window shutters, which need to withstand changes in temperature.

**Aesthetics:** Paulownia wood has a beautiful, even grain pattern and a light, natural colour that can be stained or painted to match any home decor style. This makes it a versatile choice for window shutters that need to complement a range of interior design styles.

**Sustainable:** Paulownia wood is a fast-growing species that is sustainably harvested, making it an eco-friendly choice for those looking to minimize their impact on the environment.



Austin Full Height Shutter with Mid-Rail,  
89mm Louvres and Invisitilt.

**Poplar** is a dense and strong hardwood that is resistant to warping and cracking, making it an ideal material for shutters. This means that shutters made from Poplar wood are less likely to deteriorate over time due to exposure to moisture, temperature changes, and other environmental factors.

Aesthetically, Poplar wood has a fine, uniform texture and a straight grain that makes it easy to paint. This means that shutters made from poplar wood can be customised to match any interior or exterior design scheme.

Overall, Poplar wood's combination of durability and aesthetic appeal make it an excellent choice for manufacturing window shutters.

## WOOD SHUTTERS AS UNIQUE AS YOU

### Personalise your shutters to compliment your décor

Louvres are available in five widths. Larger louvres tend to have a more contemporary feel and allow more light into a room.

Smaller louvres are perfect for smaller windows and windows that are overlooked and where privacy is important.



47mm louvre

63mm louvre

76mm louvre

89mm louvre

114mm louvre

Solid shutter

### Your shutters can be operated using various control options



#### Central Tilt Rod

Regarded as providing the classic shutter look, a Central Tilt Rod is a vertical rod, located on the front of the shutter in the centre. The rod is what enables the louvres to move in unison.



#### Offset Tilt Rod

Like the Central Tilt Rod, but the vertical rod can be located to the left or right side of the shutter panel.



#### Half Hidden Tilt Rod

A discreet tilt rod is located at the rear of the shutter panel. To open and close the louvres, you adjust any one louvre and all louvres attached to that rod will move together.



#### Invisitilt

With this control option the tilt mechanism is completely hidden within the stile of the shutter panel. To open and close the louvres, simply tilt any one of the louvres and all louvres attached to that mechanism will move together.





 **TOTALLY  
SHUTTERS**

 020 3960 6963  
 [sales@totallyshutters.co.uk](mailto:sales@totallyshutters.co.uk)  
[www.totallyshutters.co.uk](http://www.totallyshutters.co.uk)

Proud members of  
**Checkatrade.com**  
Where reputation matters